

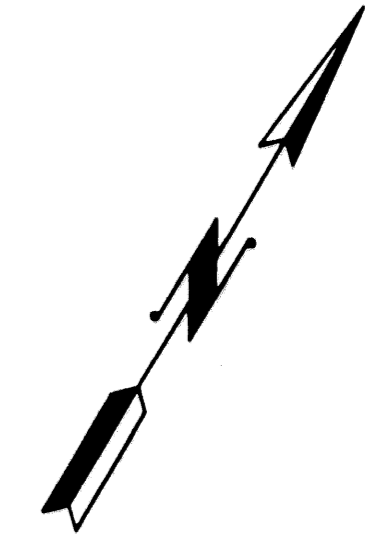
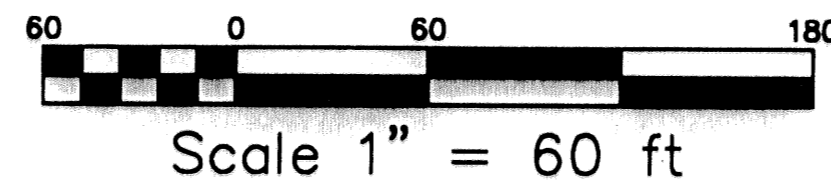
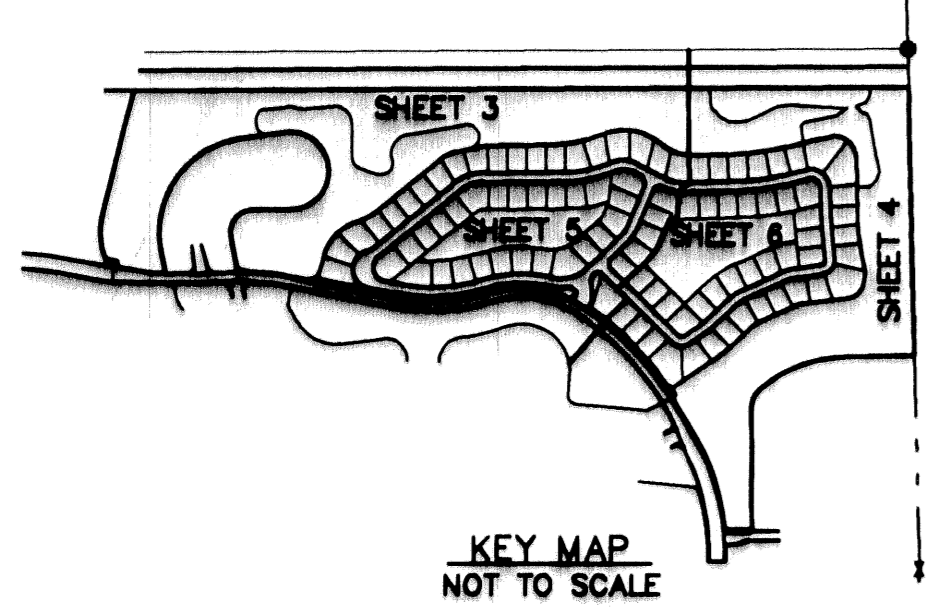
COVENTRY AT WOODFIELD COUNTRY CLUB

IN PART OF SECTION 4, TOWNSHIP 47 SOUTH, RANGE 42 EAST

CITY OF BOCA RATON, FLORIDA

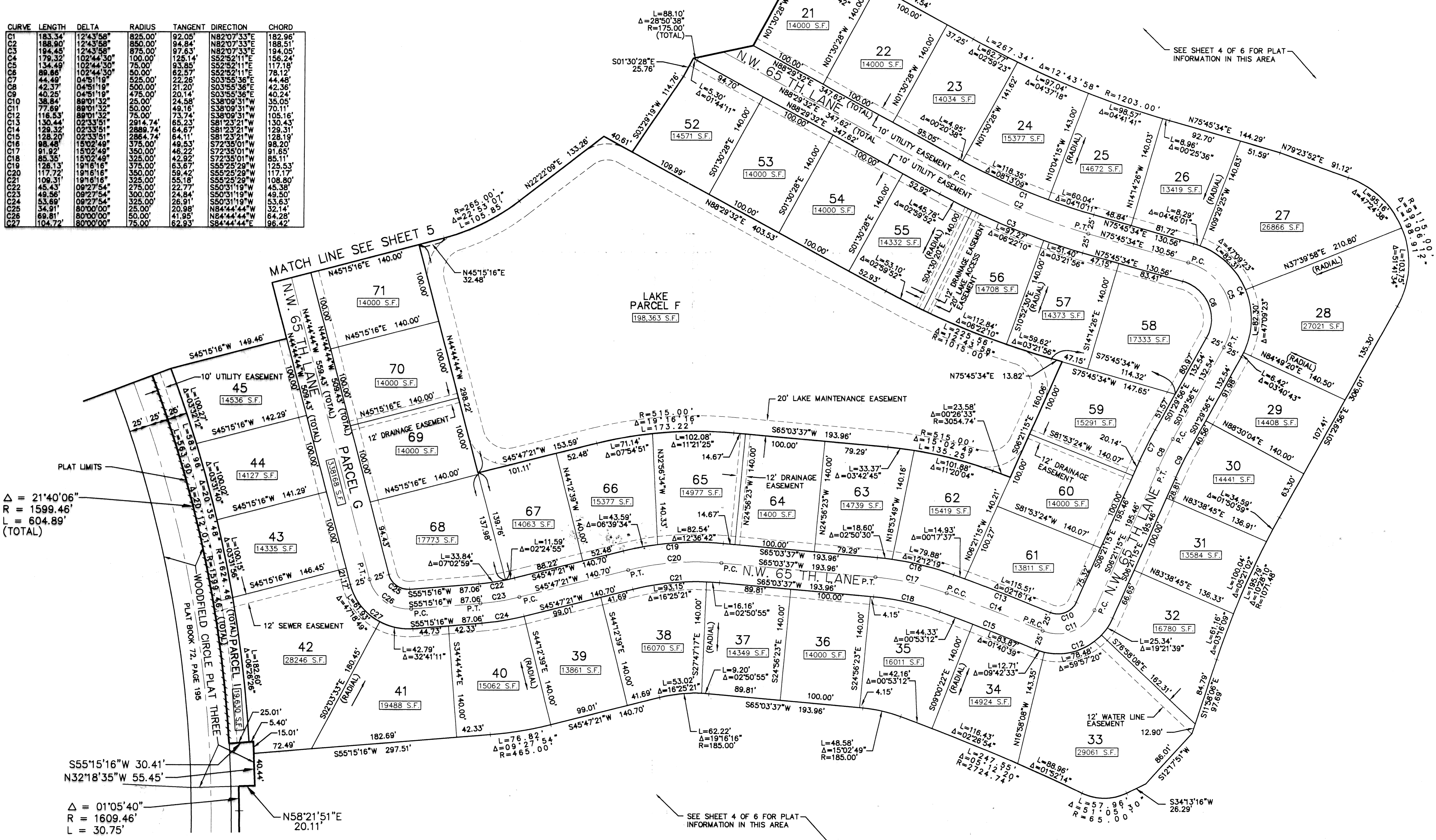
SHEET NO. 6 OF 6

GEE & JENSON
ENGINEERS - ARCHITECTS - PLANNERS, INC.
WEST PALM BEACH, FLORIDA
AUGUST 1994



STATE OF FLORIDA
COUNTY OF PALM BEACH
This plat was filed for
record at _____ W. this _____ day
of _____ 1994 and duly
recorded in Plat Book No. _____
on Pages _____ thru _____
DOROTHY H. WILKEN
Clerk Circuit Court
By _____ D. C.

CURVE	LENGTH	DELTA	RADIUS	TANGENT	DIRECTION	CHORD
C1	183.34	12°43'58"	825.00'	92.05'	N82°07'33"E	182.96'
C2	188.90	12°43'58"	850.00'	94.84'	N82°07'33"E	188.51'
C3	194.45	12°43'58"	875.00'	97.63'	N82°07'33"E	194.05'
C4	179.32	102°44'30"	100.00'	126.14'	S52°52'11"E	156.24'
C5	134.49	102°44'30"	75.00'	93.85'	S52°52'11"E	117.18'
C6	89.86	102°44'30"	50.00'	62.57'	S52°52'11"E	78.12'
C7	44.49	04°51'19"	525.00'	22.26'	S03°55'36"E	44.49'
C8	42.37	04°51'19"	500.00'	21.20'	S03°55'36"E	42.36'
C9	40.25	04°51'19"	475.00'	20.14'	S03°55'36"E	40.24'
C10	38.84	89°01'32"	25.00'	24.58'	S38°09'31"W	35.05'
C11	77.69	89°01'32"	50.00'	49.16'	S38°09'31"W	70.11'
C12	116.53	89°01'32"	75.00'	73.74'	S38°09'31"W	105.16'
C13	150.44	02°33'51"	2914.74'	65.23'	S81°23'21"W	150.43'
C14	129.32	02°33'51"	2889.74'	64.67'	S81°23'21"W	129.31'
C15	128.20	02°33'51"	2864.74'	64.11'	S81°23'21"W	128.19'
C16	98.48	15°02'49"	375.00'	49.53'	S72°35'01"W	98.20'
C17	91.92	15°02'49"	350.00'	46.22'	S72°35'01"W	91.65'
C18	85.36	15°02'49"	325.00'	42.92'	S72°35'01"W	85.11'
C19	126.13	19°16'16"	375.00'	63.87'	S55°25'29"W	125.53'
C20	117.72	19°16'16"	350.00'	59.42'	S55°25'29"W	117.17'
C21	109.31	19°16'16"	325.00'	55.18'	S55°25'29"W	108.80'
C22	45.43	09°27'54"	275.00'	22.77'	S50°31'19"W	45.39'
C23	49.56	09°27'54"	300.00'	24.81'	S50°31'19"W	49.50'
C24	53.69	09°27'54"	325.00'	26.81'	S50°31'19"W	53.63'
C25	34.91	80°00'00"	25.00'	20.98'	N84°44'44"W	32.14'
C26	69.81	80°00'00"	50.00'	41.95'	N84°44'44"W	64.28'
C27	104.72	80°00'00"	75.00'	62.93'	N84°44'44"W	96.42'



SUBDIVISION: COVENTRY AT WOODFIELD COUNTRY CLUB
BOOK: 74
FLOOR: 1
QUAD: 29
SE: 29
PUD NAME: Boca Raton

COMPUTED _____
DRAWN _____
CHECKED _____
APPROVED _____
JOB NO. 93-330